



THE SSC CONTROLS COMPANY

PREMIER INDUSTRIAL CONTROLS

Product Information Sheet

Potentiometer Foot Control with Guard (L- and M-Series with “-G” Option)

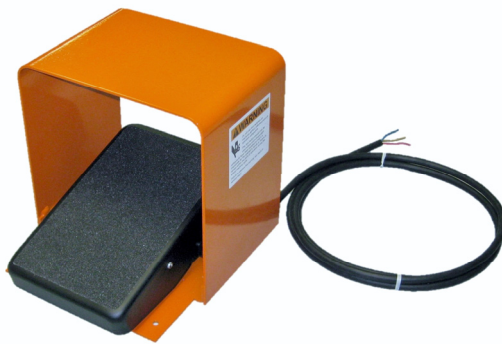
The L- and M-Series foot controls provide a variable resistance output that can be used in applications such as to vary the speed of motors with motor speed drives in voltage divider circuitry. Designed for professional/ industrial applications, they provide long life, durability, and high performance.

Design features:

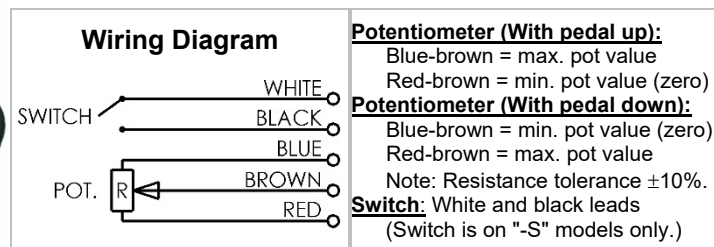
- “-G” Guard Option adds powder painted 12-gauge steel guard.
- Durable, heavy-duty design with smooth pedal action.
- Oversized top traction area fits the whole foot.
- High-life, 2-watt potentiometers with high-resolution output.
- Also includes bottom traction pad and four .22"-diameter holes for bolt-down option.

Quality features:

- Quality system certified to ISO 9001 requirements.
- Includes a 1-year warranty on parts and labor.
- Made in USA.



Dimensions (L x W x H): 9.4" x 8.2" x 8.1"; 10.7 pounds
IEC enclosure rating: IP-21
Construction: Steel, powder paint; non-slip traction pads.



Warning: To avoid personal injury, do not use foot controls on machinery lacking effective point-of-operation safeguards. Disconnect input power before installation or maintenance. This foot switch should be installed by a qualified electrician according to local and national electrical safety regulations.

Model	Action	Potentiometer	Switch	Cord
L1000-G	momentary	1,000 ohm, 2 watt, 125 VAC	n/a	8-foot cable with leads
L5000-G	momentary	5,000 ohm, 2 watt, 125 VAC	n/a	8-foot cable with leads
L10,000-G	momentary	10,000 ohm, 2 watt, 125 VAC	n/a	8-foot cable with leads
L1000-S-G	momentary	1,000 ohm, 2 watt, 125 VAC	yes (see note 4)	8-foot cable with leads
L5000-S-G	momentary	5,000 ohm, 2 watt, 125 VAC	yes (see note 4)	8-foot cable with leads
L10,000-S-G	momentary	10,000 ohm, 2 watt, 125 VAC	yes (see note 4)	8-foot cable with leads
M1000-G	maintained	1,000 ohm, 2 watt, 125 VAC	n/a	8-foot cable with leads

- Notes:**
- 1) Momentary action - Press and hold at desired level to use; spring returns upright upon release.
 - 2) Maintained action - Stays in place once you set it; pedal will not move until further adjustment.
 - 3) Other resistance values may be available. Check with SSC for availability.
 - 4) Switch circuit is rated for extra low voltage (ELV) control circuits only (circuits electrically isolated from the main line).

The SSC Controls Company
 8909 East Avenue Mentor, Ohio 44060
 Phone: 440 205-1600 Fax: 440 205-1700